

# Decorative Ballistics Exterior and Interior Panels for Home Safety

PDG Domus Corporation, a developer of high load panels for residential housing applications, is pleased to introduce its new product services, Decorative Ballistics Exterior and Interior Panels for Homes. Our panels cover a wide variety of ballistics problems without sacrificing your aesthetic needs.

## Common requested panel properties

- Category 5 hurricanes (150 mph.)
- California earthquake rating
- Bullet resistant/bullet-proof panels
- High weight load applications such as 40,000 psi ratings
- Snow load ratings of 380 lbs. per sq. ft.
- All our panels come with a class 1 fire rating for added safety

## Our Commitment to Service

We design all ballistic panels to the customer's specifications to meet every safety need. Our panels have the look and feel of stone, stucco, brick, slate, Jerusalem stone and many other natural materials. Panels can be as large as 10' x 30' panels, which allow windows and doorways to be cut in for custom fit. Please contact one of our representatives for a quote on your special needs. Your safety is our concern.



**PDG Domus Corporation**

PDG Domus Corporation • 1909 E. Livingston Ave. • Columbus, OH 43209  
614.884.2381 • Fax 614.884.2385 • <http://www.pdg-domus.com>



©2008 PDG Domus Corporation All rights reserved



All design rights and patent rights are property of (PDG) Pingel Design Group Inc. The review of these documents does not constitute a public display and is considered secret, not for public review. No copies or distribution of this document is allowed. There is no implied use of the design to anyone other than its' owner (PDG).

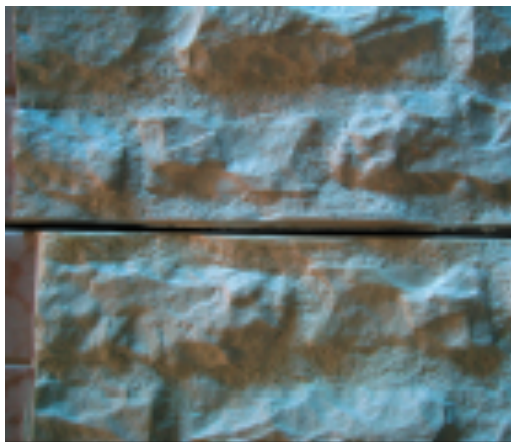
## Decorative Ballistic Panels

Pingel Design Group Inc has developed several types of ballistic panels. The manufacturing system allows the panels to be produced into any form due to its ability to be molded. The panels' fall into two major groups Stage 1 weather resistant ballistic panels, which are used in hurricane areas, and Stage 2 military application, bullet resistant panels. The following describes both applications.

By utilizing laminating technology, PDG is able to produce a wide variety of exterior treatments replicating the look of any building material available; wood, brick, stucco, stone and slate, providing homebuyers with many different architectural styles to choose from. These textures and looks are expressed in large, laminating panels varying in size from 10' to 30' wide and 5' to 10' high, although any size shape can be made. The panel can be laminated to express several textures or looks within the same panel along with architectural detail of any kind, for example, shutters, windowsills, and scalloped or other gingerbread detail.

**The stage 1** ballistic panels are engineered to be aesthetically pleasing and provide superior protection to occupants in the structure. The panels withstand 42,000 psi before breaking, burn 75% slower than wood and without toxic gases, and stand up to a category 5 hurricane. They can be used inside or outside of a structure.

As seen below, the laminating process can make a panel with the texture of natural stone, wood, brick, or other material. The wall size panel below demonstrates the scale a panel can reach and how any architectural detail can be cast into the panel.





## Stage 2

## Decorative Ballistic panels

The stage 2 panels are shown below after being shot at a range under controlled conditions. Both front and rear panel views are shown. A variety of caliber firearms were used to do the test.



The lower left corner of the photo shows the panel shot by a 12 gage shot gun with number 4 shot. This was repeated nine times. The panel was shot from a distances of 15 feet. The upper left corner of photo reflects three hits from a 38-caliber revolver. The distance to the panel was 10 feet. The upper right center of the photo shows five shots from a 357 magnum at 15 feet. The photo of the rear of the panel shows no penetration by any of the shells or pellets.

Major considerations include

- 1) Resistance to a projectile or blast, fire, and forced entry
- 2) Ease of installation
- 3) Weight
- 4) Cost and material availability



PDG offers advanced fiberglass-based materials that meet these demanding specifications.

Class 1-A, Fire- and smoke-rated building material (ASTM E84)

PDG Decorative Ballistic Panel™ product is a self-extinguishing thermo-set composite that will not catch on fire or gives off toxic smoke when exposed to intense heat, making it ideal for all types of civilian and military/defense applications.

Decorative Ballistic Panel meets UL-752 performance level standards for ballistic levels 1- 5, and is certified in accordance with the National Institute of Justice NIJ-STD-0108.01 standards. Additionally, Decorative Ballistic Panel produces no toxic fumes when burned, meeting Federal Aviation Regulation 25.853 for commercial aircraft compartment interiors. Decorative Ballistic Panel is offered as either a fully cured, rigid sheet, or as a formed product meeting decorative needs.

Decorative Ballistic Panel can be manufactured to a number of levels of bullet-resistance depending on the weapon threat and security function. The material can be cut and drilled in the field with commercial quality circular table or panel saws.

Glass fabric-based, anti-ballistic materials, such as Decorative Ballistic Panel, are one-third the weight of ballistic steel armor plate, but still provide the same level of protection. The lower weight makes the material less cumbersome to fabricate, handle, and install. The combination of lightweight and robust threat protection makes Decorative Ballistic Panel well suited for some architectural applications that would not be possible with heavier ballistic steel. Anti-ballistic fiberglass composites are also much less expensive than many conventional armor alternatives. Low cost and short lead times make Decorative Ballistic Panel an increasingly popular choice to protect valuable assets from ballistic threats.



